



Case Study

Clifton Hill Passive House Primary School



Product Range: Passive House Range / Wood-Alu

Built to Passive House Standard, low-carbon, low operational costs, low maintenance

Awards: Winner Victoria State Award as well as Australian National Award
AGWA Design and Industry Awards 2024 - Commercial Window/Glass Project under \$750,000

Architects: JCB - Jackson Clements Burrows

Builder: Kapitool Group and Figurehead

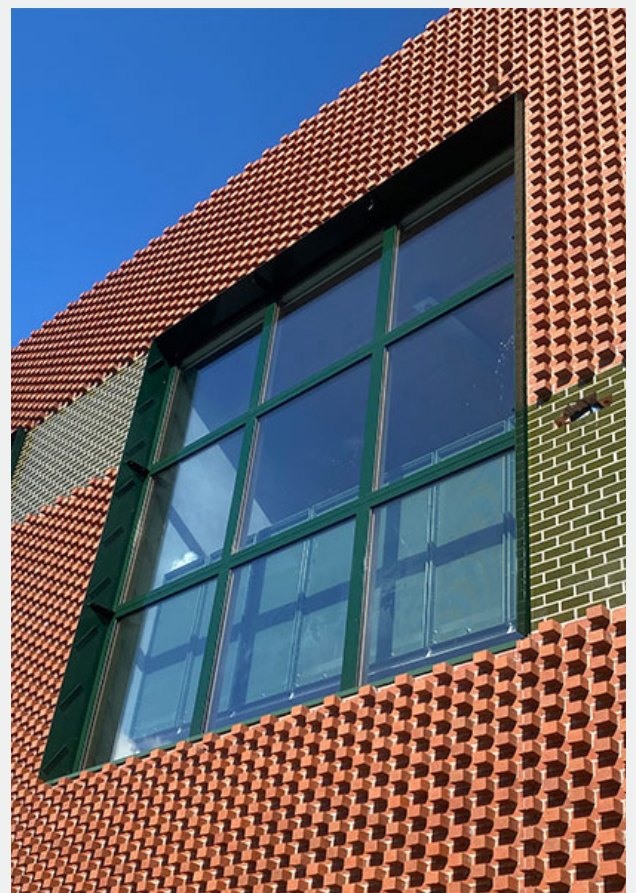
*High energy efficiency and high sound protection
to provide optimum learning environment*



Challenge

This building had a strong sustainability and health agenda: it had to be highly energy efficient to Passive House standard, achieve high sound protection, and meet stringent safety requirements and fall prevention.

It included an extra large glazed window of 35m², required barrier free thresholds for doors and French doors, it had to be airtight and the windows had to connect seamlessly to the facade fabric. The high wind area provided another challenge.





Solution

Passive House windows, doors, French doors were custom made in the Wood-Alu range with frames in timber with external aluminium cladding for low maintenance. The timber was finished in low-VOC coating. All doors used Passive House certified Alumat zero threshold. The glazing used was low-E triple glazing.

The blower door test was below the required 0.6ACH50, water egress 450pa, ultimate strength 5000pa.

These products have been tested to and comply with AS1288, AS2047, AS1428, NCC,

